

Report No.: 18300RC40074801

# Test Report

**Client Name** : **Publik D.O.O.**

---

**Client Address** : **Vladike Nikolaja 469, 14 000 Valjevo, Serbia**

---

**Product Name** : **DIGIT**

---

**Report Date** : **2024.03.27**

---

**Shenzhen Anbotek Compliance Laboratory Limited**



**Shenzhen Anbotek Compliance Laboratory Limited**

Address: East of 4/F., Building A, Hourui No.3 Industrial Zone, Xixiang Street, Bao'an District, Shenzhen, Guangdong, China  
Tel: (86) 0755-26066126 Fax: (86) 0755-26066021 Email: service@anbotek.com

 Hotline  
400-003-0500  
www.anbotek.com.cn



# Test Report

Report No.: 18300RC40074801

Page 1 of 15

**Applicant** : Publik D.O.O.

**Address** : Vladike Nikolaja 469, 14 000 Valjevo, Serbia

**The submitted sample and sample information was/were submitted and identified by/on the behalf of the client**

**Sample Name** : DIGIT

**Test Model No.** : 30.079.90

**Sample Received Date** : 2024.03.05

**Testing Period** : 2024.03.05~2024.03.12

**Test Requested** : As specified by client, to test the Lead(Pb), Cadmium(Cd), Mercury(Hg), Hexavalent Chromium(Cr(VI)), Polybrominated Biphenyl(PBBs), Polybrominated Diphenyl Ethers (PBDEs), Diisobutyl phthalate (DIBP), Dibutyl phthalate(DBP), Benzyl butyl phthalate(BBP), Di-2-ethylhexyl phthalate(DEHP) in the submitted sample in accordance with the RoHS Directive 2011/65/EU and amendment Commission Delegated Directive (EU) 2015/863 with effective from 22 July 2019.

**Test Method:** Please refer to the following page(s).

**Test Result(s):** Please refer to the following page(s).

Edited by Xupeng Qi Reviewed by zoe zheng Authorized Signatory Jiankui



# Test Report

Report No.: 18300RC40074801

Page 2 of 15

## Test Method:

### A. XRF Screening Test

XRF screening limits in mg/kg for regulated elements according to IEC 62321-3-1:2013.

| Element | Limit of IEC 62321-3-1:2013 Unit (mg/kg)             |  |  |
|---------|--|--|--|
|         | Polymers   | Metals   | Composite material                                   |
| Cd      | $BL \leq (70-3\sigma) < X < (130+3\sigma) \leq OL$   | $BL \leq (70-3\sigma) < X < (130+3\sigma) \leq OL$   | $LOD < X < (150+3\sigma) \leq OL$                    |
| Pb      | $BL \leq (700-3\sigma) < X < (1300+3\sigma) \leq OL$ | $BL \leq (700-3\sigma) < X < (1300+3\sigma) \leq OL$ | $BL \leq (500-3\sigma) < X < (1500+3\sigma) \leq OL$ |
| Hg      | $BL \leq (700-3\sigma) < X < (1300+3\sigma) \leq OL$ | $BL \leq (700-3\sigma) < X < (1300+3\sigma) \leq OL$ | $BL \leq (500-3\sigma) < X < (1500+3\sigma) \leq OL$ |
| Br      | $BL \leq (300-3\sigma) < X$                          | N.A.   | $BL \leq (250-3\sigma) < X$                          |
| Cr      | $BL \leq (700-3\sigma) < X$                          | $BL \leq (700-3\sigma) < X$                          | $BL \leq (500-3\sigma) < X$                          |

### Note:

-N.A. = Not Applicable

-BL = Under the XRF screening limit

-OL = Further chemical test will be conducted while result is above the screening limit

-X= The symbol "X" marks the region where further investigation is necessary

-3σ= The reproducibility of analytical instruments

-LOD= Detection limit

### B. Chemical Test

| Test Item(s)                           | Test Method                | Measured Equipment(s) | MDL                    | Limit      |
|--|----------------------------|-----------------------|------------------------|------------|
| Lead (Pb)                              | IEC 62321-5:2013           | ICP-OES               | 2 mg/kg                | 1000 mg/kg |
| Cadmium (Cd)                           | IEC 62321-5:2013           |                       | 2 mg/kg                | 100 mg/kg  |
| Mercury (Hg)                           | IEC 62321-4:2013+AMD1:2017 |                       | 2 mg/kg                | 1000 mg/kg |
| Hexavalent Chromium Cr(VI)             | IEC 62321-7-1:2015         | UV-VIS                | 0.10μg/cm <sup>2</sup> | ---        |
|  | IEC 62321-7-2:2017         |                       | 8 mg/kg                | 1000 mg/kg |
| Polybrominated Biphenyls (PBBs)        | IEC 62321-6:2015           | GC-MS                 | 5 mg/kg                | 1000 mg/kg |
| Polybrominated Diphenyl Ethers (PBDEs) | IEC 62321-6:2015           |                       | 5 mg/kg                | 1000 mg/kg |
| Phthalates (DIBP, DBP, BBP, DEHP)      | IEC 62321-8:2017           |                       | 50 mg/kg               | 1000 mg/kg |



# Test Report

Report No.: 18300RC40074801

Page 3 of 15

## Test Results:

| Sample No. | Sample Description   | Tested Items   | XRF Screening Test Unit (mg/kg) | Chemical Test Unit (mg/kg) | Conclusion |
|------------|----------------------|----------------|---------------------------------|----------------------------|------------|
| 1          | White plastic shell  | Pb             | BL                              | /                          | PASS       |
|            |                      | Cd             | BL                              | /                          |            |
|            |                      | Hg             | BL                              | /                          |            |
|            |                      | Cr(Cr(VI) )    | BL                              | /                          |            |
|            |                      | Br(PBBs&PBDEs) | BL                              | /                          |            |
|            |                      | DBP            | N.A.                            | N.D.                       |            |
|            |                      | BBP            | N.A.                            | N.D.                       |            |
|            |                      | DEHP           | N.A.                            | N.D.                       |            |
| 2          | White rubber block   | Pb             | BL                              | /                          | PASS       |
|            |                      | Cd             | BL                              | /                          |            |
|            |                      | Hg             | BL                              | /                          |            |
|            |                      | Cr(Cr(VI) )    | BL                              | /                          |            |
|            |                      | Br(PBBs&PBDEs) | BL                              | /                          |            |
|            |                      | DBP            | N.A.                            | N.D.                       |            |
|            |                      | BBP            | N.A.                            | N.D.                       |            |
|            |                      | DEHP           | N.A.                            | N.D.                       |            |
| 3          | Silvery metal spring | Pb             | BL                              | /                          | PASS       |
|            |                      | Cd             | BL                              | /                          |            |
|            |                      | Hg             | BL                              | /                          |            |
|            |                      | Cr(Cr(VI) )    | BL                              | /                          |            |
|            |                      | Br(PBBs&PBDEs) | N.A.                            | /                          |            |
|            |                      | DBP            | N.A.                            | /                          |            |
|            |                      | BBP            | N.A.                            | /                          |            |
|            |                      | DEHP           | N.A.                            | /                          |            |
|            |                      | DIBP           | N.A.                            | /                          |            |



# Test Report

Report No.: 18300RC40074801

Page 4 of 15

| Sample No. | Sample Description    | Tested Items   | XRF Screening Test Unit (mg/kg) | Chemical Test Unit (mg/kg) | Conclusion |
|------------|-----------------------|----------------|---------------------------------|----------------------------|------------|
| 4          | Silvery metal sheet   | Pb             | BL                              | /                          | PASS       |
|            |                       | Cd             | BL                              | /                          |            |
|            |                       | Hg             | BL                              | /                          |            |
|            |                       | Cr(Cr(VI) )    | BL                              | /                          |            |
|            |                       | Br(PBBs&PBDEs) | N.A.                            | /                          |            |
|            |                       | DBP            | N.A.                            | /                          |            |
|            |                       | BBP            | N.A.                            | /                          |            |
|            |                       | DEHP           | N.A.                            | /                          |            |
| 5          | White plastic bracket | Pb             | BL                              | /                          | PASS       |
|            |                       | Cd             | BL                              | /                          |            |
|            |                       | Hg             | BL                              | /                          |            |
|            |                       | Cr(Cr(VI) )    | BL                              | /                          |            |
|            |                       | Br(PBBs&PBDEs) | BL                              | /                          |            |
|            |                       | DBP            | N.A.                            | N.D.                       |            |
|            |                       | BBP            | N.A.                            | N.D.                       |            |
|            |                       | DEHP           | N.A.                            | N.D.                       |            |
| 6          | Silvery metal screw   | Pb             | BL                              | /                          | PASS       |
|            |                       | Cd             | BL                              | /                          |            |
|            |                       | Hg             | BL                              | /                          |            |
|            |                       | Cr(Cr(VI) )    | BL                              | /                          |            |
|            |                       | Br(PBBs&PBDEs) | N.A.                            | /                          |            |
|            |                       | DBP            | N.A.                            | /                          |            |
|            |                       | BBP            | N.A.                            | /                          |            |
|            |                       | DEHP           | N.A.                            | /                          |            |
| DIBP       | N.A.                  | /              |                                 |                            |            |



# Test Report

Report No.: 18300RC40074801

Page 5 of 15

| Sample No. | Sample Description     | Tested Items   | XRF Screening Test Unit (mg/kg) | Chemical Test Unit (mg/kg) | Conclusion |
|------------|------------------------|----------------|---------------------------------|----------------------------|------------|
| 7          | Silvery metal shrapnel | Pb             | BL                              | /                          | PASS       |
|            |                        | Cd             | BL                              | /                          |            |
|            |                        | Hg             | BL                              | /                          |            |
|            |                        | Cr(Cr(VI) )    | BL                              | /                          |            |
|            |                        | Br(PBBs&PBDEs) | N.A.                            | /                          |            |
|            |                        | DBP            | N.A.                            | /                          |            |
|            |                        | BBP            | N.A.                            | /                          |            |
|            |                        | DEHP           | N.A.                            | /                          |            |
| 8          | Silvery metal screw    | Pb             | BL                              | /                          | PASS       |
|            |                        | Cd             | BL                              | /                          |            |
|            |                        | Hg             | BL                              | /                          |            |
|            |                        | Cr(Cr(VI) )    | BL                              | /                          |            |
|            |                        | Br(PBBs&PBDEs) | N.A.                            | /                          |            |
|            |                        | DBP            | N.A.                            | /                          |            |
|            |                        | BBP            | N.A.                            | /                          |            |
|            |                        | DEHP           | N.A.                            | /                          |            |
| 9          | Green PCB board        | Pb             | BL                              | /                          | PASS       |
|            |                        | Cd             | BL                              | /                          |            |
|            |                        | Hg             | BL                              | /                          |            |
|            |                        | Cr(Cr(VI) )    | BL                              | /                          |            |
|            |                        | Br(PBBs&PBDEs) | BL                              | /                          |            |
|            |                        | DBP            | N.A.                            | N.D.                       |            |
|            |                        | BBP            | N.A.                            | N.D.                       |            |
|            |                        | DEHP           | N.A.                            | N.D.                       |            |
| DIBP       | N.A.                   | N.D.           |                                 |                            |            |



# Test Report

Report No.: 18300RC40074801

Page 6 of 15

| Sample No. | Sample Description               | Tested Items   | XRF Screening Test Unit (mg/kg) | Chemical Test Unit (mg/kg) | Conclusion |
|------------|----------------------------------|----------------|---------------------------------|----------------------------|------------|
| 10         | Silvery metal crystal oscillator | Pb             | BL                              | /                          | PASS       |
|            |                                  | Cd             | BL                              | /                          |            |
|            |                                  | Hg             | BL                              | /                          |            |
|            |                                  | Cr(Cr(VI) )    | BL                              | /                          |            |
|            |                                  | Br(PBBs&PBDEs) | N.A.                            | /                          |            |
|            |                                  | DBP            | N.A.                            | /                          |            |
|            |                                  | BBP            | N.A.                            | /                          |            |
|            |                                  | DEHP           | N.A.                            | /                          |            |
| 11         | Silvery metal pin                | Pb             | BL                              | /                          | PASS       |
|            |                                  | Cd             | BL                              | /                          |            |
|            |                                  | Hg             | BL                              | /                          |            |
|            |                                  | Cr(Cr(VI) )    | BL                              | /                          |            |
|            |                                  | Br(PBBs&PBDEs) | N.A.                            | /                          |            |
|            |                                  | DBP            | N.A.                            | /                          |            |
|            |                                  | BBP            | N.A.                            | /                          |            |
|            |                                  | DEHP           | N.A.                            | /                          |            |
| 12         | Transparent plastic sheet        | Pb             | BL                              | /                          | PASS       |
|            |                                  | Cd             | BL                              | /                          |            |
|            |                                  | Hg             | BL                              | /                          |            |
|            |                                  | Cr(Cr(VI) )    | BL                              | /                          |            |
|            |                                  | Br(PBBs&PBDEs) | BL                              | /                          |            |
|            |                                  | DBP            | N.A.                            | N.D.                       |            |
|            |                                  | BBP            | N.A.                            | N.D.                       |            |
|            |                                  | DEHP           | N.A.                            | N.D.                       |            |
| DIBP       | N.A.                             | N.D.           |                                 |                            |            |



# Test Report

Report No.: 18300RC40074801

Page 7 of 15

| Sample No. | Sample Description   | Tested Items   | XRF Screening Test Unit (mg/kg) | Chemical Test Unit (mg/kg) | Conclusion |
|------------|----------------------|----------------|---------------------------------|----------------------------|------------|
| 13         | Black plastic shell  | Pb             | BL                              | /                          | PASS       |
|            |                      | Cd             | BL                              | /                          |            |
|            |                      | Hg             | BL                              | /                          |            |
|            |                      | Cr(Cr(VI) )    | BL                              | /                          |            |
|            |                      | Br(PBBs&PBDEs) | BL                              | /                          |            |
|            |                      | DBP            | N.A.                            | N.D.                       |            |
|            |                      | BBP            | N.A.                            | N.D.                       |            |
|            |                      | DEHP           | N.A.                            | N.D.                       |            |
| 14         | White plastic jacket | Pb             | BL                              | /                          | PASS       |
|            |                      | Cd             | BL                              | /                          |            |
|            |                      | Hg             | BL                              | /                          |            |
|            |                      | Cr(Cr(VI) )    | BL                              | /                          |            |
|            |                      | Br(PBBs&PBDEs) | BL                              | /                          |            |
|            |                      | DBP            | N.A.                            | N.D.                       |            |
|            |                      | BBP            | N.A.                            | N.D.                       |            |
|            |                      | DEHP           | N.A.                            | N.D.                       |            |
| 15         | Chip audion          | Pb             | BL                              | /                          | PASS       |
|            |                      | Cd             | BL                              | /                          |            |
|            |                      | Hg             | BL                              | /                          |            |
|            |                      | Cr(Cr(VI) )    | BL                              | /                          |            |
|            |                      | Br(PBBs&PBDEs) | BL                              | /                          |            |
|            |                      | DBP            | N.A.                            | N.D.                       |            |
|            |                      | BBP            | N.A.                            | N.D.                       |            |
|            |                      | DEHP           | N.A.                            | N.D.                       |            |
| DIBP       | N.A.                 | N.D.           |                                 |                            |            |





# Test Report

Report No.: 18300RC40074801

Page 8 of 15

| Sample No. | Sample Description               | Tested Items   | XRF Screening Test Unit (mg/kg) | Chemical Test Unit (mg/kg) | Conclusion |
|------------|----------------------------------|----------------|---------------------------------|----------------------------|------------|
| 16         | Chip resistor                    | Pb             | BL                              | /                          | PASS       |
|            |                                  | Cd             | BL                              | /                          |            |
|            |                                  | Hg             | BL                              | /                          |            |
|            |                                  | Cr(Cr(VI) )    | BL                              | /                          |            |
|            |                                  | Br(PBBs&PBDEs) | BL                              | /                          |            |
|            |                                  | DBP            | N.A.                            | N.D.                       |            |
|            |                                  | BBP            | N.A.                            | N.D.                       |            |
|            |                                  | DEHP           | N.A.                            | N.D.                       |            |
| 17         | Red plastic jacket               | Pb             | BL                              | /                          | PASS       |
|            |                                  | Cd             | BL                              | /                          |            |
|            |                                  | Hg             | BL                              | /                          |            |
|            |                                  | Cr(Cr(VI) )    | BL                              | /                          |            |
|            |                                  | Br(PBBs&PBDEs) | BL                              | /                          |            |
|            |                                  | DBP            | N.A.                            | N.D.                       |            |
|            |                                  | BBP            | N.A.                            | N.D.                       |            |
|            |                                  | DEHP           | N.A.                            | N.D.                       |            |
| 18         | Silvery metal crystal oscillator | Pb             | BL                              | /                          | PASS       |
|            |                                  | Cd             | BL                              | /                          |            |
|            |                                  | Hg             | BL                              | /                          |            |
|            |                                  | Cr(Cr(VI) )    | BL                              | /                          |            |
|            |                                  | Br(PBBs&PBDEs) | N.A.                            | /                          |            |
|            |                                  | DBP            | N.A.                            | /                          |            |
|            |                                  | BBP            | N.A.                            | /                          |            |
|            |                                  | DEHP           | N.A.                            | /                          |            |
| DIBP       | N.A.                             | /              |                                 |                            |            |



# Test Report

Report No.: 18300RC40074801

Page 9 of 15

| Sample No. | Sample Description   | Tested Items   | XRF Screening Test Unit (mg/kg) | Chemical Test Unit (mg/kg) | Conclusion |
|------------|----------------------|----------------|---------------------------------|----------------------------|------------|
| 19         | IC                   | Pb             | BL                              | /                          | PASS       |
|            |                      | Cd             | BL                              | /                          |            |
|            |                      | Hg             | BL                              | /                          |            |
|            |                      | Cr(Cr(VI) )    | BL                              | /                          |            |
|            |                      | Br(PBBs&PBDEs) | BL                              | /                          |            |
|            |                      | DBP            | N.A.                            | N.D.                       |            |
|            |                      | BBP            | N.A.                            | N.D.                       |            |
|            |                      | DEHP           | N.A.                            | N.D.                       |            |
| 20         | White chip capacitor | Pb             | BL                              | /                          | PASS       |
|            |                      | Cd             | BL                              | /                          |            |
|            |                      | Hg             | BL                              | /                          |            |
|            |                      | Cr(Cr(VI) )    | BL                              | /                          |            |
|            |                      | Br(PBBs&PBDEs) | BL                              | /                          |            |
|            |                      | DBP            | N.A.                            | N.D.                       |            |
|            |                      | BBP            | N.A.                            | N.D.                       |            |
|            |                      | DEHP           | N.A.                            | N.D.                       |            |
| 21         | Chip capacitor       | Pb             | BL                              | /                          | PASS       |
|            |                      | Cd             | BL                              | /                          |            |
|            |                      | Hg             | BL                              | /                          |            |
|            |                      | Cr(Cr(VI) )    | BL                              | /                          |            |
|            |                      | Br(PBBs&PBDEs) | BL                              | /                          |            |
|            |                      | DBP            | N.A.                            | N.D.                       |            |
|            |                      | BBP            | N.A.                            | N.D.                       |            |
|            |                      | DEHP           | N.A.                            | N.D.                       |            |
| DIBP       | N.A.                 | N.D.           |                                 |                            |            |



# Test Report

Report No.: 18300RC40074801

Page 10 of 15

**Note:**

- The screening results are only used for reference.
  - When conducting the test for PBBs&PBDEs, XRF was introduced to screen Br Exclusively; When conducting the test for Hexavalent Chromium, XRF was introduced to screen Chromium exclusively.
  - BL = Under the XRF screening limit
  - OL = Further chemical test will be conducted while result is above the screening limit
  - X= The symbol "X" marks the region where further investigation is necessary
  - LOD= Detection limit
  - MDL = Method Detection Limit
  - N.A. = Not Applicable
  - N.D. = Not Detected (<MDL)
  - /=Not tested
  - 1mg/kg = 1ppm = 0.0001%
  - $\mu\text{g}/\text{cm}^2$  = microgramme per square centimeter
  - "—"=
- a. -Negative = Absence of Cr(VI), the detected Cr(VI) concentration in the boiling water extraction solution is less than  $0.10\mu\text{g}/\text{cm}^2$ .
  - b. -Positive = Presence of Cr(VI), the detected Cr(VI) concentration in the boiling water extraction solution is greater than  $0.13\mu\text{g}/\text{cm}^2$ .
  - c. The result is between  $0.10\mu\text{g}/\text{cm}^2$  with  $0.13\mu\text{g}/\text{cm}^2$  is considered to be inconclusive-unavoidable coating variations may influence the determination.



# Test Report

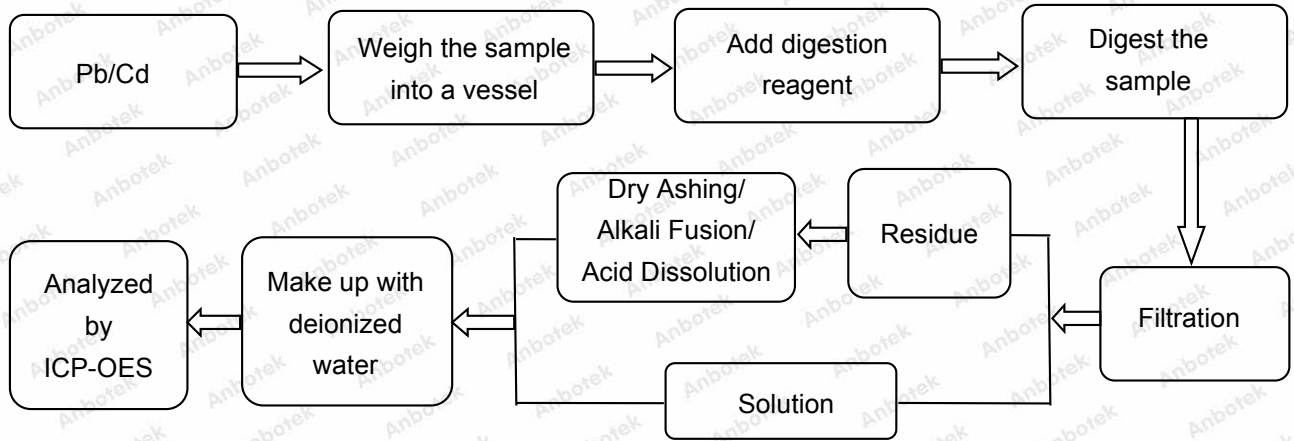
Report No.: 18300RC40074801

Page 11 of 15

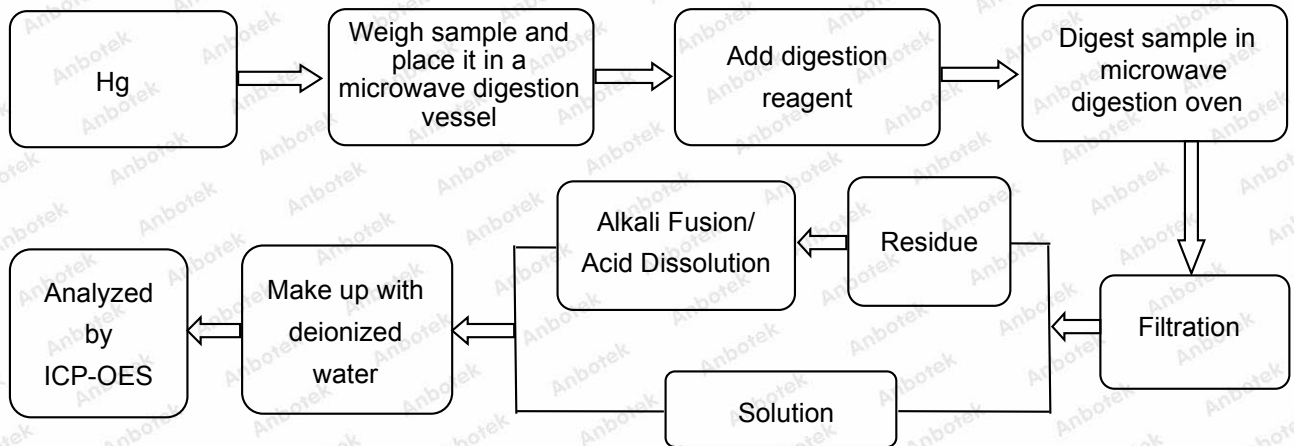
**Test Process:**

The sample(s) had been dissolved totally tested for Lead, Cadmium, Mercury.

◆ **IEC 62321-5:2013**



◆ **IEC 62321-4:2013+AMD1:2017**

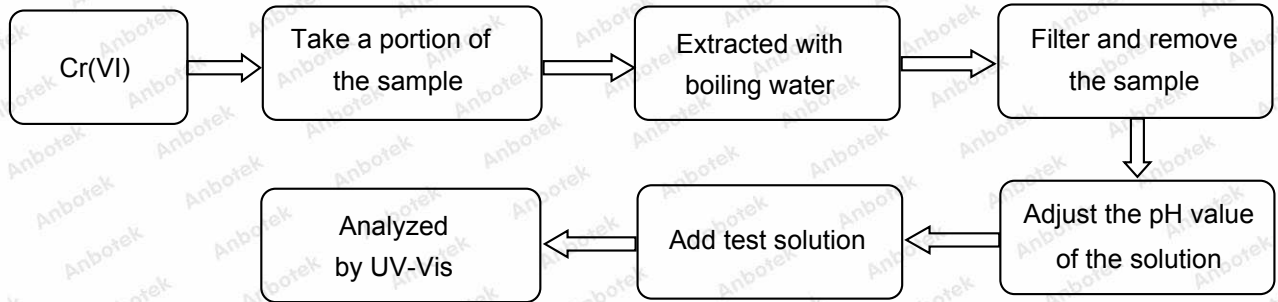


# Test Report

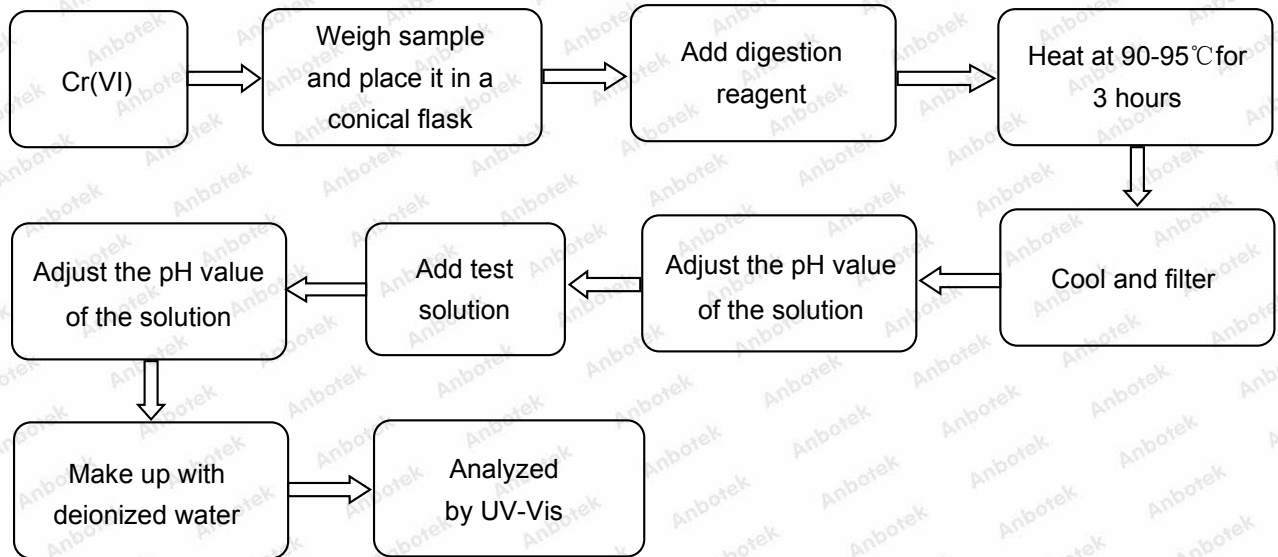
Report No.: 18300RC40074801

Page 12 of 15

◆ **IEC 62321-7-1:2015**



◆ **IEC 62321-7-2:2017**

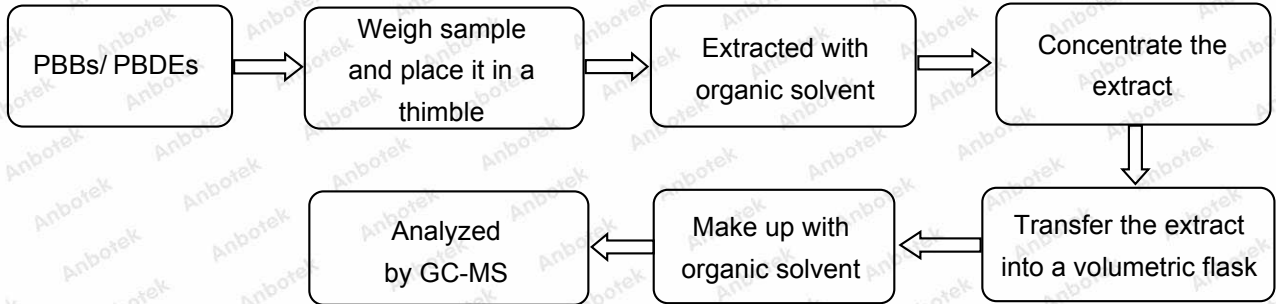


# Test Report

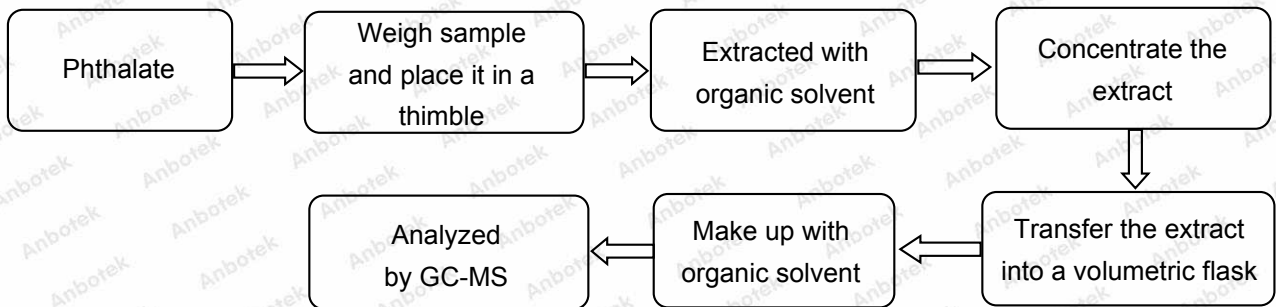
Report No.: 18300RC40074801

Page 13 of 15

◆ **IEC 62321-6:2015**



◆ **IEC 62321-8:2017**

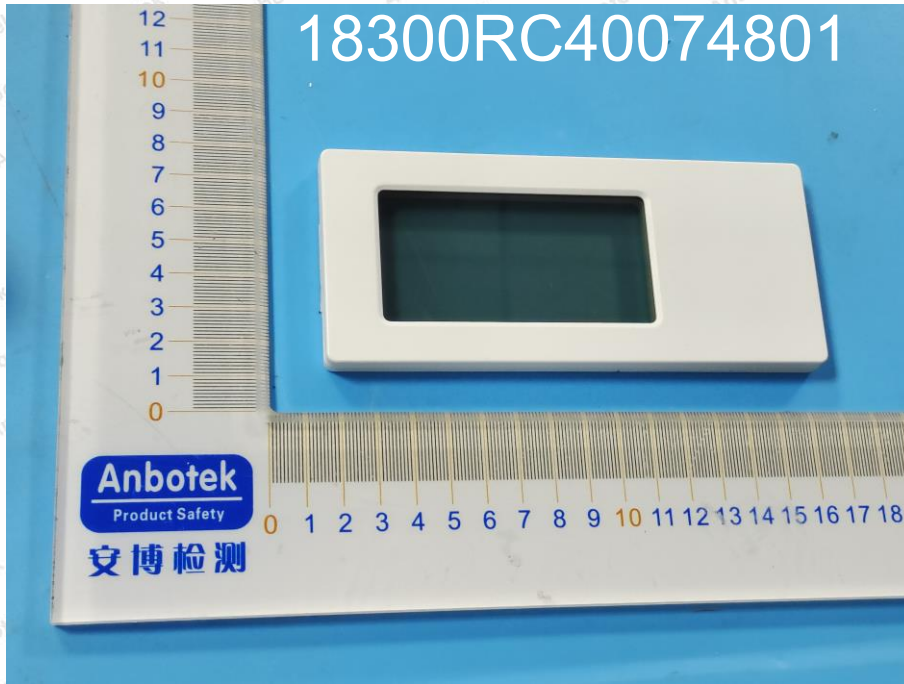


# Test Report

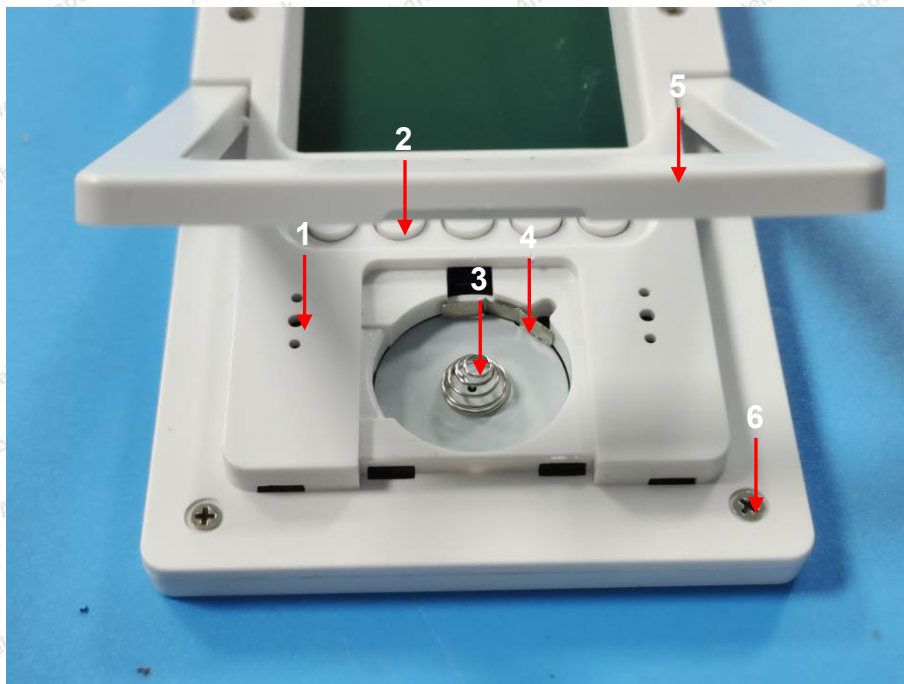
Report No.: 18300RC40074801

Page 14 of 15

## Photograph of Sample



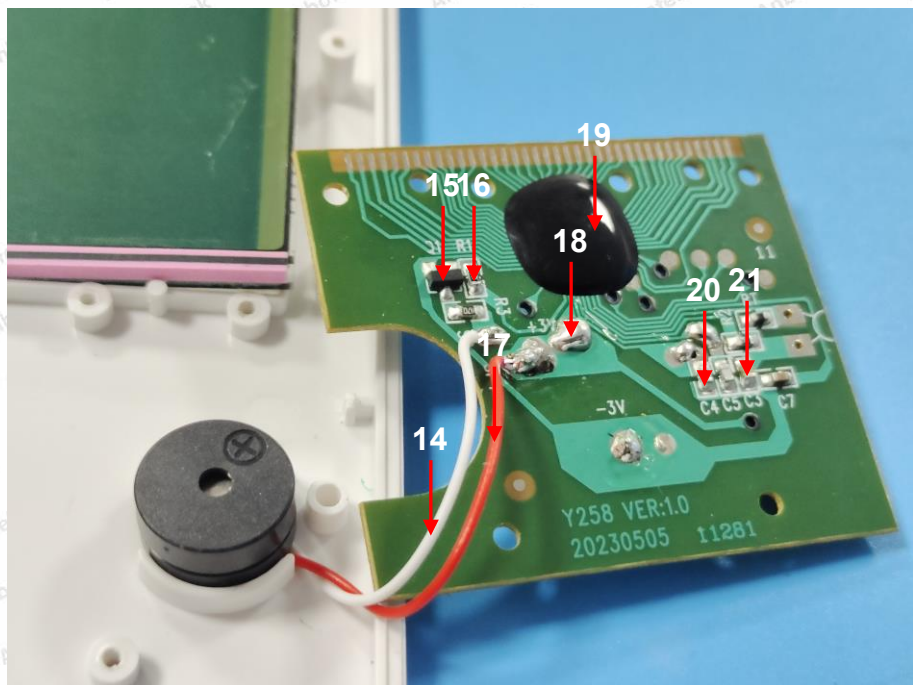
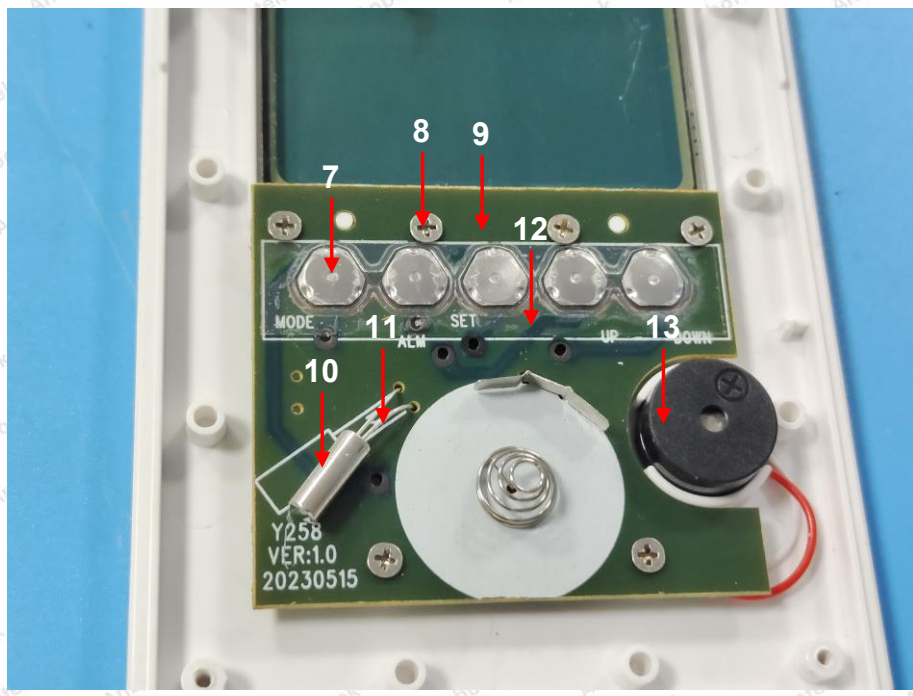
## Photo(s) of the tested component(s)



# Test Report

Report No.: 18300RC40074801

Page 15 of 15



\*\*\*\* End of Report \*\*\*\*

The test report is effective only with both signature and specialized stamp. The result(s) shown in this report refer only to the sample(s) tested. Without written approval of Anbotek, this report can't be reproduced except in full.

